



Spring Valley Lake Association

Operations Report

March 25, 2014

Page 1 of 3

Facilities, Maintenance and Grounds:

Equestrian Estates

- Trimmed over 20 trees around Play fair Park.
- Continuing weed abatement at the bridle trails and started preventive post-emergent treatments.
- Cameras at Yorkshire and Catalina are set up with our DVR and recording



Buildings

- We have been upgrading interior light to LED as replacements are required.
- We have started network analysis as we will separate the security camera network from the computer network to improve performance on both networks.
- Installed a few additional can lights in CB1 for event use.

Grounds

- We have are back to regular schedule on landscaping with these warm temps
- We have fertilized more than 40+ acres of common areas.
- We have removed 7 over-grown trees on the Green belt.
- Provided and clean up sand and sand bags that were available to the community for this past storm.
- Repaired exit lighting system around the Community building
- Continuing pre-emergent treatments at all common areas.



Grounds continued:

- Started construction of temporary PVC barricades to be used for outdoor events, these barricades will replace the use of cones and caution tape as used in the past.
- Replaced the broken Flag light at the AO with a new LED light.

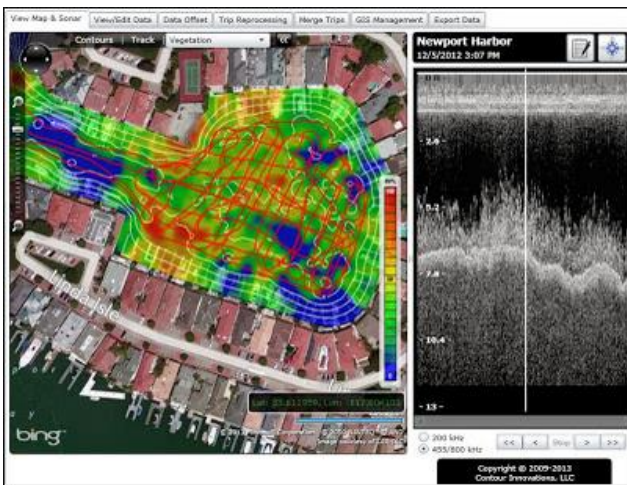
Lake and Fishing Areas:

Marina/ Lake

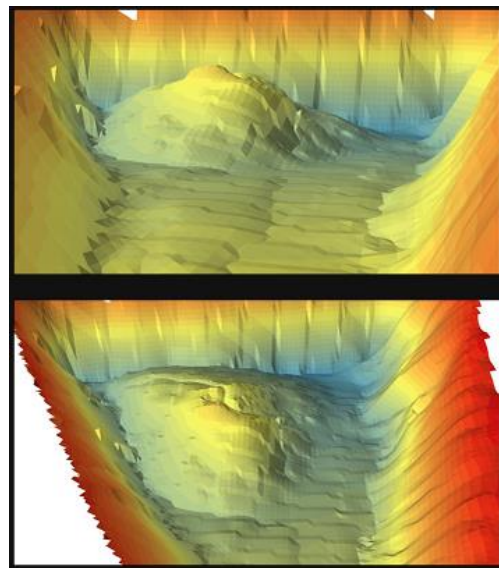
- Installed revised electrical main panels at FA6 and FA9, we are currently waiting on SCE to re-energize these locations.
- Replaced the defective main electrical panel at FA3, this area will require SCE to pull new conduit and wire from their vault to our panel.
- Installed solar lights on all perimeter buoys and all center line and channel entrance buoys.



- We are working with the Senior Water Resource control engineer from CA Regional Water Quality Control Board with our bacteriological data and QA/QC plan and compiling data from the last 3 years.
- Working with our lake consultant on the past 5 years of complied lake data and protocol. We will also be working on a Aquatic bathymetric and vegetation map of our lake, This will show us the lake bottom contour depth and liner hardness. It will also provide us valuable information about the vegetation location, density, height and percentage of coverage.



Data showing contour and vegetation



exported data sent out for 3D view (extra cost)



Lake and Fishing Areas continued:

- We have planted another 1000 plants of *Vallisneria Americana* in a new containment near FA 15. These plants were successfully planted last year in the south end. They spread like crabgrass and only grow 3-4' high, providing fish habitat, absorbing nutrients from the water and holding down sediment. The new containment is not located in the "temporary environmental impact study area".



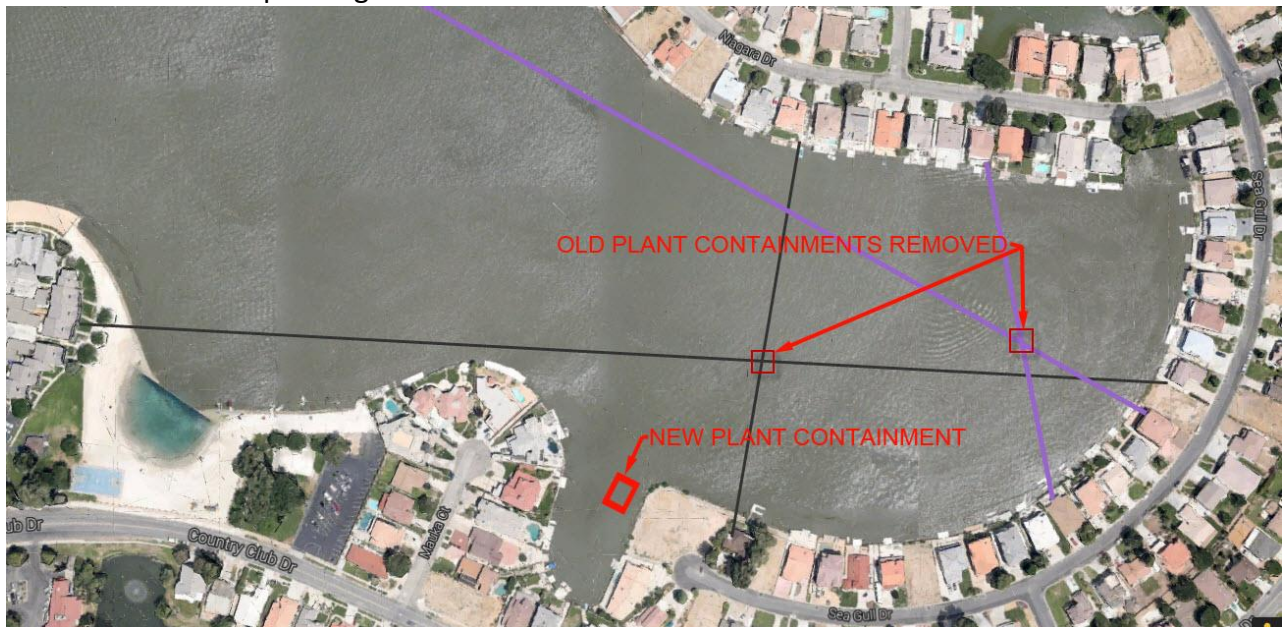
Containment in location



setting up plants



Plants shown after planting



Satellite view of new plant containment in its location and old containments before they were removed.